

# COMPANY PROFILE

OF P.N. COMPOSITE LIMITED



**QUALITY | COMMITMENT | INNOVATION**

# ABOUT OUR COMPANY

---

**P.N. Composite Limited** is one of Bangladesh's leading fully integrated knit apparel manufacturers, built on a foundation of excellence, innovation, and responsible production. From humble beginnings, the company has grown into a modern fiber-to-fashion composite industry delivering reliable, high-quality products to global brands.

As we move into 2026, **P.N. Composite Limited** enters its 3rd Generation - marking a new chapter of strategic expansion, technological advancement, and a stronger commitment to sustainability. This transition reinforces our legacy while driving us toward a more innovative and future-ready apparel manufacturing model.

Our vertically integrated operations include knitting, dyeing, printing, embroidery, washing, cutting, sewing, and finishing - giving us full control over quality, efficiency, and lead time. Supported by skilled professionals and advanced machinery, we provide premium knitwear solutions for fashion, activewear, and corporate markets around the world.

We operate with a strong sense of responsibility toward our employees, clients, and the environment. Through energy-efficient systems, eco-friendly processes, and compliance with global standards, we continue to strengthen our role as a trusted and sustainable manufacturing partner.

Guided by the vision of the 3rd Generation, **P.N. Composite Limited** remains focused on innovation, digital transformation, and long-term value creation - committed to delivering superior apparel and building enduring global partnerships.

# VISION

---

To become a globally recognized apparel manufacturer delivering world-class products driven by integrity, sustainability, and innovation.

# MISSION

---

To produce premium-quality, innovative, and sustainable ready-made garments that enhance customer experiences, empower our employees, and contribute positively to the global apparel industry.



# OUR GOALS

## OUR COMMITMENT TO EXCELLENCE

- Continuously innovate and expand our product range to meet evolving customer needs and global market trends.
- Maintain uncompromising standards of quality and craftsmanship throughout all manufacturing stages.
- Foster a culture of inclusivity, diversity, and empowerment across our workforce.
- Implement sustainable and eco-friendly practices across the supply chain to minimize environmental impact.
- Build strong, transparent, and respectful partnerships with suppliers, customers, and stakeholders.
- Achieve operational excellence and efficiency to strengthen profitability and ensure long-term financial stability.

## CORE VALUES

- Quality & Consistency
- Customer Commitment
- Innovation & Sustainability
- Ethical Manufacturing
- Continuous Improvement





# WHAT WE DO

## FULL VERTICAL INTEGRATION

At **P.N. Composite Limited**, we operate a fully verticalized textile and apparel ecosystem from fiber and fabric innovation to garment manufacturing, accessory sourcing, finishing, and global logistics.

Our integrated structure ensures total control over quality, maximum operational efficiency, and faster delivery timelines.

With all key processes managed In-house, we maintain complete visibility and seamless coordination across every department, creating a smooth workflow from design concept to final shipment.

## SCALE, REACH & EXPERIENCE

With over **21 years** of industry expertise, **P.N. Composite Limited** has grown into one of Bangladesh's most trusted and diversified apparel manufacturing groups.

Our **3,000+ skilled** professional workers across modern facilities equipped with advanced technologies and automated systems, ensuring excellence in every step of production.

We proudly achieve an annual turnover exceeding **USD 100 million**, with products exported to **15+ countries** worldwide, serving international fashion, corporate, and activewear brands.

# MESSAGE FROM THE MANAGEMENT

## MESSAGE FROM THE MANAGING DIRECTOR



The **P.N. Composite Limited**, we believe apparel manufacturing is not just about fabric and fashion - it's about people, process, product, and planet.

Our success comes from a relentless commitment to quality, timely delivery, sustainability, and long-term relationships with our clients. We also uphold a strong commitment to the environment and corporate social responsibility (CSR).

We invite you to partner with us as we continue to redefine apparel excellence on the global stage.

Thank You.

With Regards,  
**Mr. Apurba Kumar Saha**  
Managing Director,  
**P.N. Composite Limited**  
Phone : +88 01713 387 600  
E-mail : [apurba@pncomposite.com](mailto:apurba@pncomposite.com)  
Web : [www.pncomposite.com](http://www.pncomposite.com)

## MESSAGE FROM THE DIRECTORS



As the Director of **P.N. Composite Limited**, I am proud of the progress we have made through our commitment to quality, responsibility, and continuous improvement. Our dedicated team and advanced capabilities allow us to deliver reliable products and maintain strong relationships with our global clients.

We will continue to invest in innovation, uphold ethical practices, and strengthen our position in the industry as we move forward.

**Ashis Kumar Saha**  
Director,  
Compliance & Welfare  
**P.N. Composite Limited**  
Phone : +88 01711 526 356  
E-mail : [ashis@pncomposite.com](mailto:ashis@pncomposite.com)  
Web : [www.pncomposite.com](http://www.pncomposite.com)

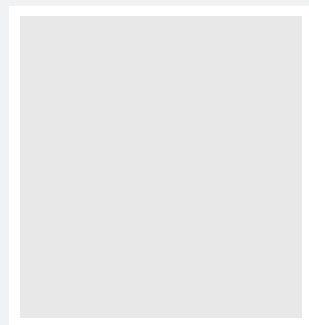


At **P.N. Composite Limited**, we believe in delivering excellence through responsibility, innovation, and teamwork. Our focus has always been on maintaining strong quality standards and building long-term trust with our clients.

As we continue to grow, my commitment is to ensure that our company remains ethical, efficient, and aligned with the evolving needs of the global market.

**Ratan Kumar Saha**  
Director,  
Compliance & Welfare  
**P.N. Composite Limited**  
Phone : +88 01711 528 565  
E-mail : [ratan@pncomposite.com](mailto:ratan@pncomposite.com)  
Web : [www.pncomposite.com](http://www.pncomposite.com)

## MESSAGE FROM THE GM, AGM & CFO



At **P.N. Composite Limited**, our goal is to deliver value-driven solutions that meet the evolving needs of global buyers. Through strong product development, timely communication, and a deep understanding of market trends, we ensure our clients receive quality, reliability, and consistent support. We remain committed to building long-term partnerships and driving growth for both our customers and our company.

### **Your Name**

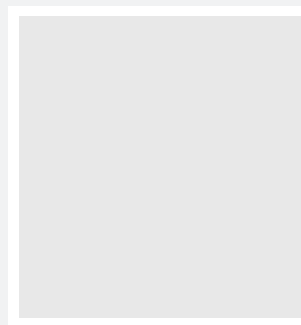
General Manager,  
Marketing & Merchandising

### **P.N. Composite Limited**

Phone : +88 01712 669 775

E-mail : gm\_marketing@pncomposite.com

Web : www.pncomposite.com



At **P.N. Composite Limited**, we place the highest priority on maintaining a safe, ethical, and compliant workplace. Our commitment to employee welfare, fair practices, and industry standards ensures a responsible and productive environment. We continue to strengthen our compliance systems and support our workforce so they can perform at their best with confidence and dignity.

### **Your Name**

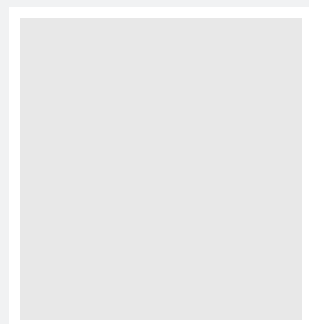
Assistant General Manager,  
Compliance & Welfare

### **P.N. Composite Limited**

Phone : +88 01713 387 620

E-mail : Compliance@pncomposite.com

Web : www.pncomposite.com



At **P.N. Composite Limited**, our focus is on understanding market trends and delivering products that meet our clients' evolving needs. Through strategic planning, timely communication, and a dedicated team, we ensure quality, reliability, and consistent support for all our customers.

### **Your Name**

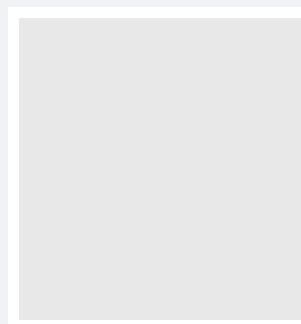
Assistant General Manager,  
Marketing & Merchandising

### **P.N. Composite Limited**

Phone : +88 01713 387 641

E-mail : merchandisingmanager@pncomposite.com

Web : www.pncomposite.com



At **P.N. Composite Limited**, financial discipline and transparent management are the foundations of our sustainable growth. Our Finance & Accounts team works diligently to ensure accuracy, efficiency, and strong financial planning across all operations.

We remain committed to supporting the company's expansion, strengthening accountability, and maintaining a stable financial structure that builds long-term trust with our partners and clients.

### **Your Name**

Chief Financial Officer,  
Department of Finance & Accounts

### **P.N. Composite Limited**

Phone : +88 01313 359 331

E-mail : cfo@pncomposite.com

Web : www.pncomposite.com

# ENVIRONMENT

## OUR COMMITMENT TO A SUSTAINABLE ENVIRONMENT

**P.N. Composite Limited** is committed to keeping the environment green. The **P.N. Composite Limited** have implemented the most efficient modern technology to reduce our carbon footprint as we are committed to making an eco-friendly workstation. Moreover, we at **P.N. Composite Limited** are following strict hygiene-guideline inside and outside of the whole organisation. Along with all these initiatives, we pride ourselves on maintaining a ZERO discharge of hazardous chemicals since inception.

## ETP & WTP PLANT

**P.N. Composite Limited** has already laid the most modern ETP & WTP plants to protect the environment from contamination and prevent nearby rivers from heavy soiling and exposure to hazardous chemicals.

## ZLD (ZERO LIQUID DISCHARGE)

For the first time in Bangladesh, **P.N. Composite Limited** has committed a Zero Liquid Discharge system that will involve reusing the water from the textiles and processing it for reuse. This goes beyond the premises of the factory and helps keep the nearby areas pollution-free from chemicals.





# FIRE & SAFETY UNIT

## FIRE EXTINGUISHERS

Active fire protection devices are set on each floor to extinguish or control small fires in any emergencies. Our building has a wide range of world-class fire extinguishers, which help us prevent fire incidents from spreading.

## FIRE DRILL

Our factory runs a complete **“Fire Drill”** every 15 days and keeps records of all such activities to simulate a fire incident. A regular check on fire alarms, exits and emergency lights is maintained all around the factory.

## FIRE HYDRANT

There are enough fire protection systems, sufficient hydrants, hose reels and other related equipment. These fire hydrant pumps can tap into a water supply which helps to prevent fire incidents.



# CERTIFICATIONS & COMPLIANCE

**P.N. Composite Limited** ensures global compliance with the highest ethical and environmental standards. Commitment to Sustainability & Certification.

**P.N. Composite Limited's** sustainability is a core principle of our operations. We follow internationally recognized environmental, ethical, and safety standards to minimize our ecological footprint and protect the wellbeing of our workforce. Our facilities comply with global certifications such as OEKO-TEX®, GOTS, ISO, WRAP, and BSCI, ensuring transparency and responsible manufacturing across every stage.

We continue to invest in eco-friendly technologies, water and energy efficiency, and waste reduction systems to support a greener future for the apparel industry.



## CERTIFICATIONS & MEMBERSHIPS

- BSCI (Business Social Compliance Initiative)
- WRAP (Worldwide Responsible Accredited Production)
- OEKO-TEX Standard 100
- ISO 9001:2015
- SEDEX Certified

## OUR COMMITMENT

- ✓ Zero Child Labor
- ✓ Free Healthcare Support
- ✓ Women's Safety, Respect & Empowerment
- ✓ Safe & Compliance-Driven Workplace
- ✓ Fair Wages & Gender Equality
- ✓ Environment-Friendly Production

# SKILLED WORKFORCE



**P.N. Composite Limited** is powered by a highly skilled and diverse workforce of over **3,000+** experienced & professionals across multiple units. The company employs engineers, quality experts, technicians, designers, machine operators, and support staff, all trained to ensure precision, productivity, and innovation. Specialized teams across **knitting, dyeing, printing, embroidery, cutting, sewing, finishing, and logistics** ensure seamless coordination and end-to-end excellence. Continuous training, efficient line management, and a strong culture of discipline and responsibility enable the workforce to maintain international standards, meet global buyer requirements, and deliver superior apparel consistently.

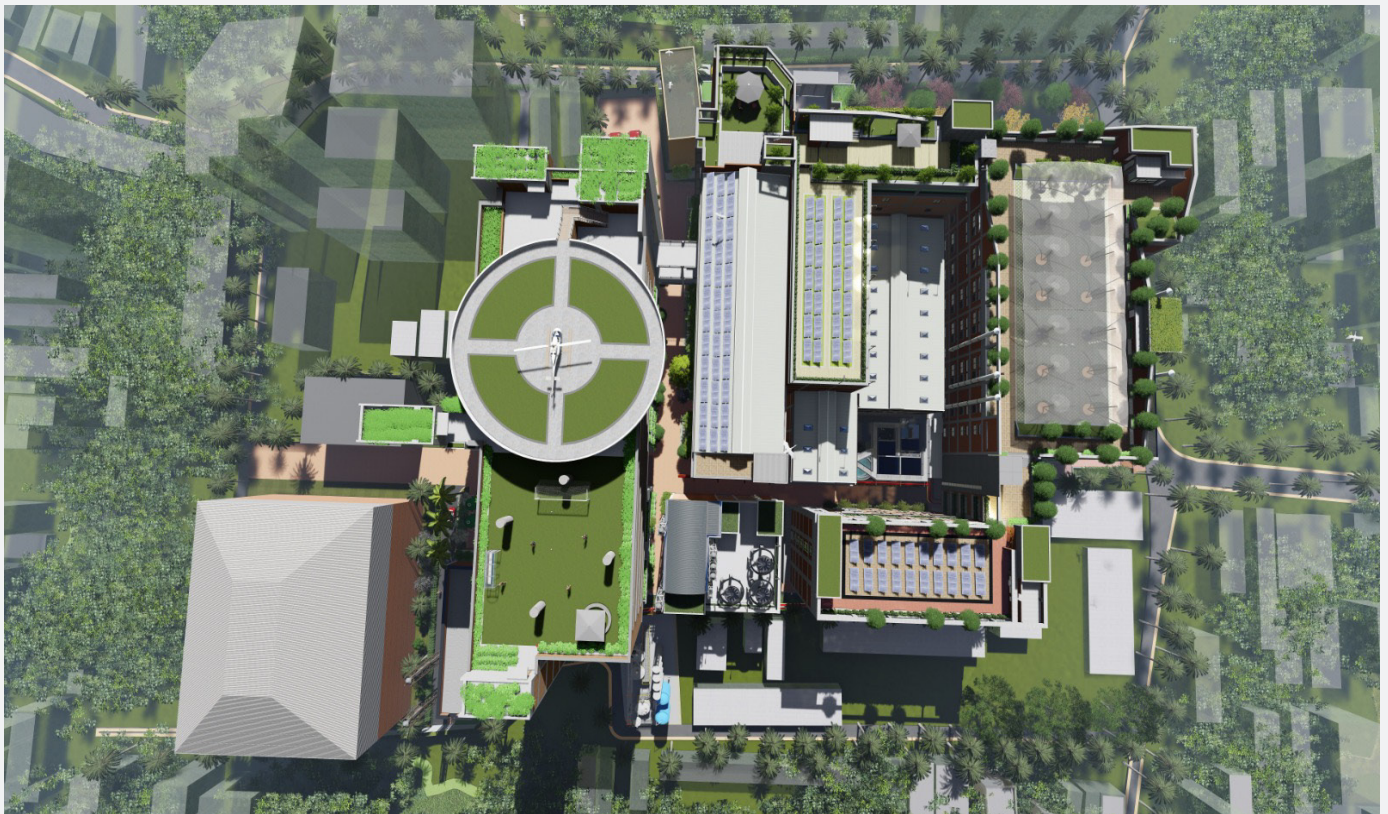


# FACTORY QUICK FACTS



**ESTABLISHED: 2004**

- **Annual Turnover:** USD 100 Million
- **Export Markets:** Europe, USA, UK, Australia, Asia, and the Middle East
- **Product Range:** T-shirts, Polo Shirt, Trousers, Skirts, Jackets, Hoodie, Shorts, Sweatshirt, and Zip Thru.
- **Number of Sewing Lines:** 40
- **Number of Sewing Machines:** 850 units
- **Total Workforce:** 3000+ skilled workers





# FACTORY AREA DETAILS

**P.N. Composite Limited** has the best of technology and the best of manpower working seamlessly to deliver world's best Jersey knitwear. Our manufacturing process has been vertically integrated to facilitate all under lean (5S) process involved in garment manufacture under one roof. This enables us to reduce time in completing our order.

## **B.M.I.S:**

Total Complex Land Area : 363,146 sft, Floor Area : 2,88,899 sft, Production Area : 2,37,844 sft, Storage Area : 35,000 sft, Dining Area : 7,000 sft, Shade Area : 10,920 sft.

## **Textile World:**

Knitting: 25,000 Kgs fabrics per day, **Dyeing:** 40,000 kgs per day.

All Over Printing: 10,000 kilos per day, **Washing:** 15,000 pieces per day.

Auto Printing: 50,000 pieces per day, **Embroidery:** 1.5 million stitches per day.

## **Readymade Garments World:**

40,000 Pieces Basic Garments per day, 20,000 Pieces Casual Garments per day. 10,000 pieces Jacket / Polo Shirts / Fashion trends Garments per day.

## **Utility:**

Natural gas own generation captive Power Plant, **Diesel Generator** (Cummins, 500 kw) 2 Nos Standby. **Air Compressor** (Atlas Copco- 55KW) 2 Nos, **Air Compressor** (Atlas Copco- 110KW) 2 Nos. **Thermax Boiler** - Capacity 25 GMT, **Clever Brooks** - Capacity 6.5 MT.

## **Lab:**

High Precious Testing Solutions of Textile Fabric, RMG & All ecological chemical and physical compliance equipment.

## **Compliance:**

Buyer COC, Certification, Membership, License in Land Law.

## **CSR:**

Child Care, Medical, Prayer Room, Gym, Fair Price Shop, Others — Day / Month / Year Program.

## **Security Monitoring:**

Full Time under CCTV Surveillance.

# FACTORY QUALITY SYSTEM

At **P.N. Composite Limited**, we ensure a secure and reliable production process from start to finish. Our In-house Quality Assurance and Control teams maintain strict supervision over every stage from fabric and trims inspection to pattern, sewing, finishing, and packing.

We conduct continuous internal audits and follow an Acceptable Quality Level (AQL) of 2.5–4.0, depending on customer requirements. Each product is developed and inspected to meet international standards of durability, accuracy, and appearance.

Through disciplined processes and continuous improvement, we guarantee consistent quality, on-time delivery, and total customer satisfaction in every order.



# OUR COMMITMENT TO ENERGY CONSERVATION

## CONDENSATION TRAP

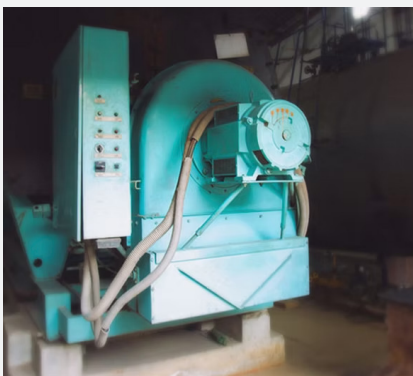
Condensate-Traps and Condensate-Recovery-Pumps have been installed at the factory to collect and transfer the condensed chemicals to the boiler feed tank, reducing the amount of energy needed to heat the rest of the tank. Our condensation traps contribute to energy-saving and improved functionality for many applications involving compressed air and compressed gas systems. The Drain-All Condensate Handler has become the industry standard as an efficient way to purging water from compressed air systems.

## BOOSTER PUMPS AND AIR COMPRESSOR

A booster pump is a machine that increases the pressure of fluid & is also used for increasing gas pressure, transferring high-pressure gas, charging gas cylinders and scavenging. We use water pressure booster pumps to provide adequate water pressure to the upper floors of our buildings. An Air compressor is a device that converts power into potential energy stored in pressurised air, using an electric motor, diesel or gasoline engine etc.



## ECONOMIZER BOILER



Economizer Boiler raises the boiler feed water temperature, lowering the needed energy input, reducing the rated boiler output's firing rates. Our boiler feed tank is adequately insulated to maintain the feedwater temperature above 90°C at all times. Moreover, we are using a built-in economiser in the boiler that recovers heat from exhaust gases, which transfers this to the incoming boiler feed water, thus increasing the overall boiler thermal efficiency and reducing CO2 emissions.

# BUSINESS UNIT

We serve clients through multiple specialized verticals, ensuring a one-stop solution for all apparel and textile needs.

## GARMENTS UNIT

Our garment division produces a wide range of apparel from fashion wear, corporate uniforms, and activewear to sportswear. Each product is developed with precision, quality assurance, and an understanding of brand identity and end-user comfort.

**P.N. Composite Limited** combines innovative design, modern machinery, and skilled craftsmanship to deliver both high-volume production and custom collections.

## TEXTILE UNIT

Our in-house textile division supports the full fabric development process, including knitting, dyeing, finishing, and testing. By producing our own fabrics, we maintain complete control over quality, color accuracy, and sustainability standards.

This integration ensures reliability, shorter lead times, and the ability to meet specific fabric requirements for each client.

## ACCESSORIES UNIT

The accessories division provides a comprehensive range of trims and components from labels, zippers, buttons, elastic, packaging, and heat transfers to complete the apparel product. By managing accessory sourcing and manufacturing internally, we achieve consistency, reduce delays, and uphold product integrity throughout the supply chain.

## LOGISTICS & SUPPLY CHAIN UNIT

Our logistics division ensures smooth, efficient, and timely delivery of all finished goods. With an advanced ERP tracking system, professional documentation, and global freight partnerships, **P.N. Composite Limited** provides end-to-end supply chain management from raw material import to final shipment.



# RESEARCH & DEVELOPMENT

OUR R&D DEPARTMENT CONTINUOUSLY INNOVATES NEW MATERIALS AND DESIGNS TO MEET EVOLVING FASHION TRENDS.

## FOCUS AREAS

- Performance Fabrics
- Recycled & Sustainable Textiles
- 3D Sampling and Virtual Fitting
- Trend Forecasting
- Customization for Brand Identity



# READYMADE GARMENTS WORLD

**P.N. Composite Limited** has the best of technology and the best of manpower working seamlessly to deliver world's best knitwear. Our manufacturing process has been vertically integrated to facilitate all the processes involved in garment manufacture under one roof. This Enables us to reduce the time spent in completing our order.



# MACHINERY DETAILS

SL No.	Types of Machinery
01	Knitting Machine
02	Utility Machine
03	Dyeing Machine
04	AOP Machine
05	Washing Machine
06	Pre-Finishing Machine
07	Finishing Machine
08	Brushing Machine
09	LAB Machine
10	Chest Printing Machine
11	Embroidery Machine
12	Accessories Machine
13	RMG Machine
14	CAD Cutting Machine
15	Finishing Iron Table

## GARMENTS MACHINERY LIST

Name of Machine	Brand	Model No	Machine Q	Total Q
Single Needle Lock Stitch	Brother	S6200N /S7100/S7300	190	395
Single Needle Lock Stitch	Brother	SL1010/7340	130	
Single Needle Lock Stitch	juki	DDL8300N	75	
Vertical Lockstitch	Brother	S777B	10	10
Wave Stitch	Golden Wheel	-	03	03
Shuttle Stitch	Nisho	NJ200	01	01
Plain zig-zag	Juki/Brother	LZ2284N/Z8560A	04	04
Twin Needle Lock	Brother	T8420B	10	10
Over Lock	Pegasus	MX5200	331	376
Over Lock	juki	MO6700	45	
Flat Lock Cylinder Bed	Pegasus	W600 PWT	162	235
Flat Lock Small Bed	Pegasus/G.Wheel	W200 T	21	
Flat Lock Flat Bed	Pegasus	W1500/W500	52	
Flat Lock Heming	Pegasus/juki	WT600/MF7800	41	41
Button Hole	Brother/juki	HE800	17	17
Button Stitch	Brother/juki	BE438 DF FS	16	16
Bartacking	Brother	KE430 DF FS	27	27
Rib cutter	Dino	LU-933	07	07
Feet of arm	Brother	DA9270	05	05
Kansai- PMD	KANSAI	DFB-1404	04	04
Backtape	Pegasus/Yamato	W500/VT1502	26	26
Pecoting m/c	KANSAI	PX-302-4W	03	03
FD Semer	Yamato	FD62DRY	02	02
FD Semer	Yamato	VFK-2560-152M	03	03
Heat seal	R. K	-	04	04
Thread Recuing	Winda	-	01	01
Fusing M/C	Hashima	HP450	03	03
Snap Button M/C	Nisho	NH-SB47	15	15
<b>TOTAL</b>	-	-	-	-
Cloth cutting	KM	KS-AU-V-10",8"	12	12
Numbering m/c	BLIPZ	2253	10	10
<b>TOTAL</b>	-	-	-	-
Needle Detector	Oshoma	ON-688CDD II	04	04
CTN Straping	Oshima	-	02	02
Thread Sucking	China	-	03	03
Iron Table (Vacuum)	Oshima/Ramson	OPB-777/	71	71
Steam Iron	Oshima/Ramson	OPB-777/	71	71
<b>TOTAL</b>	-	-	-	<b>1481</b>



# READYMADE GARMENTS WORLD

**Number of Production Lines:** 40 Lines.

**Product Range:** T-shirts, Polo Shirt, Trousers, Skirts, Jackets, Hoodie, Shorts, Sweatshirt, and Zip Thru.

## WORK-IN- PROCESS & DELIVERY SCHEDULE (FROM APPROVAL TO READY TO SHIP)

Group	Production Per Day Capacity	Lead Time (Approval Inspection)	Lead Time for Shipping (Sea / Air)	
Basic Garments	40,000 pieces (Approx.)	25–75 Days *Based on Lead Time	USA / CANADA	Sea: 30–45 days Air: 3–7 days
Casual Garments	20,000 pieces (Approx.)		UK / EUROPE	Sea: 21–35 days Air: 2–5 days
Jacket / Jogger / Fashion / Polo Shirts	10,000 pieces (Approx.)		ASIA	Sea: 15–21 days



# MANPOWER STRENGTH OF PRODUCTION (RMG)

Designation	Sewing	Cutting	Finishing	Quality	Planning	Total
In-charge						
Line Chief/Controller	9			30		39
Supervisor / Pattern. Master	48	9	8			65
Q. I				152		152
Iron man			54			54
Sample man / Sample QI						37
Polly/ Assort man				78		78
Folding man					30	30
Operator	569					569
Assistant/ Input Man/ Iron Man	159	45	45			249
Cutter man		66				66
Marker man						
Production Recorder	10	2	4			16
Spot Remover			5			5
Sub Total						1360
Maintenance In-charge	Supporting Departments				2	343
Maint. Supervisor					5	
Mechanic/Electrician Asst.					35	
Admin. Staff / Accounts Asst.					27	
Medical Asst.					2	
Planning Asst.					1	
I,E Asst					1	
Driver/Peon/Checker/Cleaner					178	
Store In-charge/Store Asst.					20	
Store Asst. / Loader					72	
Management Staff	General Manger	Manager/DM/AM Executive				
Grand Total						1703

# OVERVIEW OF THE ACCESSORIES WORLD



## Sewing Thread

- Polyester
- Cotton
- Filament

## Drawcord Twill Tape



## Elastic

## ACCESSORIES MACHINERY DETAILS

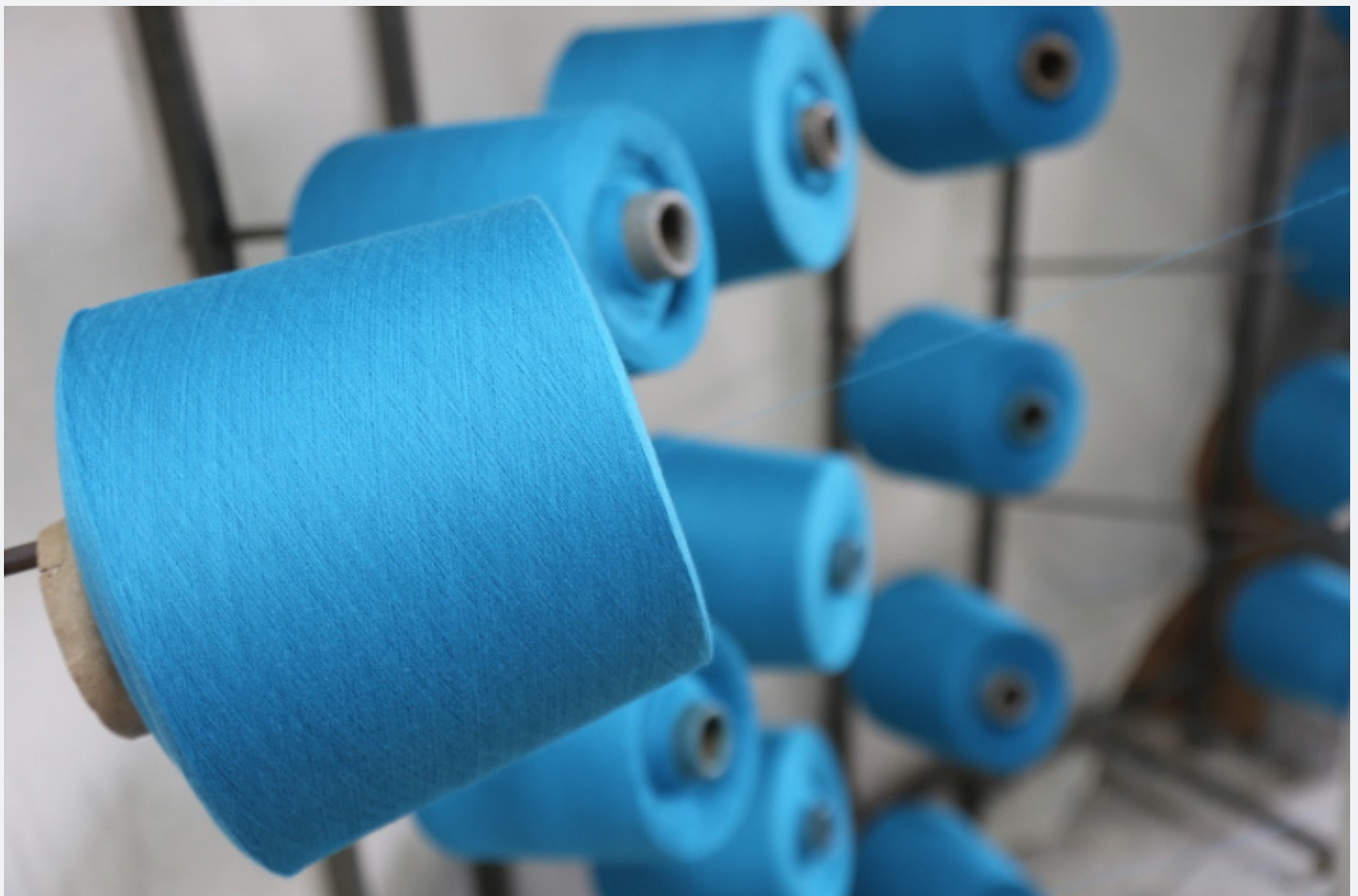
Name of Machine	Q (Set)	Model No	Brand
Elastic Machine	2	LB-5000	Taiwan Giu Chun
Elastic Machine	4	MODEL:LB-5000	TCH
Twill Tape Machine	3	YKL-110	Shanghai Hai
Jaccard Elastic Machine	5	C6-55-384	YITAI
Jaccard Elastic Machine	1	C6-55-320	YITAI
Dusting Machine	4	YTS-2-48/YTS-2-16	YITAI
Dusting Machine	3	YTS-2-32	YITAI
HIGH SPEED BRAIDING MACHINE	4	YTS 2/48	YITAI
Sewing Thread Machine	4	3	Changli Textile Machinery
Gum Tape M/C Including Elastic M/C	1	TA-203	Kunshan Furi
ONE USED HEIDELBERG KORS PRINTING MACHINE	1	KORS	PNS
ONE USED HEIDELBERG MO SINGLE COLOUR OFFSET PRINTING MACHINE	1	MO	PNS
ONE USED POLAR 115 EMC PAPER CUTTING MACHINE	1	115 EMC-MON	PNS
ONE USED HEIDELBERG CYLINDER LETTER PRESS MACHINE	1		PNS
4 COLORS FLEXO LABEL PRINTING MACHINE	1	JR1231	JINGDA
Ultrasonic Cutting and Creasing Machine	1	JC3080	JINGDA
Drying Oven Machine	1	101- 4	JINGDA
Heavy duty Plain Lamination Machine	1		SUPER SUJATA
HOT STMPING & CREASING MACHINE	1	TYMB750	CHINA
PLATE MAKING MACHINE	1	SBD1150	CHINA
Computerized Narrow Fabric Jocquard Loom Machine	2	YTB-C 6/55/384	YITAI
Sample Warping Machine	1	YTC-W 304	YITAI
Cone Yarn Winding Machine	1	YTC-W 406	YITAI
Computerized Narrow Fabric Jocquard Loom Machine	2	YTB-C-8/45/320	YITAI
Crochet Knitting Machine	2	TM-CK 400/ B3	CHINA
Latex Warping Machine	1	TM-LW60	CHINA
Rubber Yarn Covering Machine	1	KS 160 A	CHINA
Callender Machine	1		



# OVERVIEW OF THE TEXTILE WORLD

**P.N. Composite Limited** operates one of Bangladesh's most advanced and vertically integrated textile ecosystems, combining knitting, dyeing, finishing, printing, washing, and embroidery under one unified structure. With state-of-the-art machinery sourced from renowned global brands such as **PAILUNG, JIUNN LONG, FUKUHARA, MCS, BIANCO, BRUCKNER, CANLAR, ZIMMER**, and others. The company ensures world-class production standards and consistent quality across every stage of fabric processing.

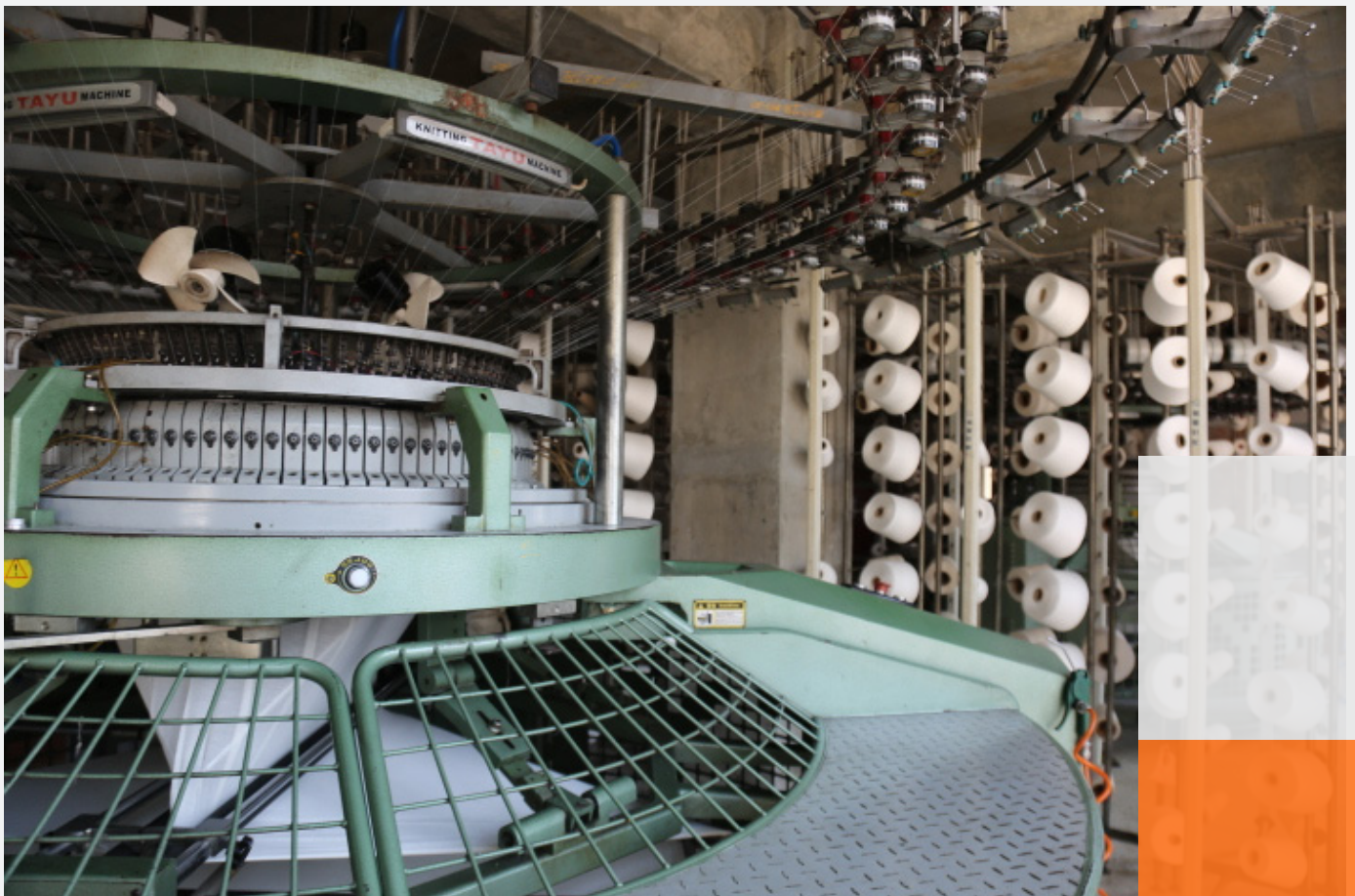
The textile division is designed to deliver high-volume output with exceptional precision.



# OVERVIEW OF THE TEXTILE WORLD

## KNITTING DIVISION

The Knitting Division is equipped with advanced circular and flat knitting machines from global brands such as **PAILUNG**, **JIUNN LONG**, **FUKUHARA**, and **PAILONG**. We produce a wide range of high-quality fabrics including Single Jersey, Pique, Lacoste, Terry, Rib, Interlock, and Fleece, with lycra and specialty variations.



## KNITTING DIVISION MACHINE LIST

Fabric Type	Brand Name	ORIGIN	Machine Dia	Machine Gauge	Machine Q
S/J, P/Lacost, Terry	Paillung	TAIWAN	30"	24	4
S/J, P/Lacost, Terry	Paillung	TAIWAN	34"	24	2
S/J, P/Lacost, Terry	Paillung	TAIWAN	36"	24	6
S/J, P/Lacost, Terry	Paillung	TAIWAN	38"	24	2
S/J, P/Lacost, Terry	Paillung	TAIWAN	30"	24	2
S/J, P/Lacost, Terry	Jinun Long	TAIWAN	30"	24	2
S/J, P/Lacost, Terry	Jinun Long	TAIWAN	32"	24	4
S/J, P/Lacost, Terry	Jinun Long	TAIWAN	36"	24/20/28	1
S/J, P/Lacost, Terry	Jinun Long	TAIWAN	38"	24	1
S/J, P/Lacost, Terry	Jinun Long	TAIWAN	42"	24	1
RIB/INTERLOCK FULL FEEDER LYCRA ATTACHMENT	Jinun Long	TAIWAN	24"	18	1
RIB/INTERLOCK FULL FEEDER LYCRA ATTACHMENT	Jinun Long	TAIWAN	30"	18	1
RIB/INTERLOCK FULL FEEDER LYCRA ATTACHMENT	Jinun Long	TAIWAN	34"	18	1
RIB/INTERLOCK FULL FEEDER LYCRA ATTACHMENT	Jinun Long	TAIWAN	36"	18	1
RIB/INTERLOCK FULL FEEDER LYCRA ATTACHMENT	Jinun Long	TAIWAN	38"	18	1
RIB/INTERLOCK FULL FEEDER LYCRA ATTACHMENT	Jinun Long	TAIWAN	42"	18	1
RIB/INTERLOCK FULL FEEDER LYCRA ATTACHMENT	FUKUHARA	JAPAN	34"	18	1
INTERLOCK	Paillung	TAIWAN	30"	24	1
INTERLOCK	Paillung	TAIWAN	36"	24	1
INTERLOCK	Paillung	TAIWAN	30"	24	1

Fabric Type	Brand Name	ORIGIN	Machine Dia	Machine Gauge	Machine Q
RIB FULL FEEDER LYCRA ATTACHMENT	JINUNLONG	TAIWAN	30"	18/20	1
FLEECE	GONGLIH	TAIWAN	30"	20	6
FLEECE	GONG LIH	TAIWAN	34"	20	1

Fabric Type	Brand Name	ORIGIN	Machine Dia	Machine Gauge	Machine Q
SOLID, TIPPING, RASING WITH LYCRA ETC.	J. YLYE	TAIWAN	52"	14	5
SOLID, TIPPING, RASING WITH LYCRA ETC.	J. YLYE	TAIWAN	68"	14	5

Fabric Type	Brand Name	ORIGIN	Machine Dia	Machine Q
L/C	Rib	TCM	India 14/16	2
Rib	Yunata	China	44"	2



# OVERVIEW TEXTILE WORLD

## DYEING DIVISION

The Dyeing Division features advanced machinery from Fong's, MCS, Bianco, and Bruckner, ensuring precise and consistent dyeing quality. With a combined capacity of up to 40 tons per day, the unit handles sample dyeing, bulk dyeing, stenter finishing, compacting, drying, and washing.

Strict quality control ensures accurate color, shrinkage stability, and eco-friendly processing across all fabric types.





## DYEING DIVISION MACHINE LIST - UNIT 01

Product Name	Brand	Model	Machine Type	Capacity	Power	UoM
High Temperature Dyeing Machine	FONG'S	TECWIN-6T30	Bulk	1800	48	KW
High Temperature Dyeing Machine	FONG'S	TECWIN-6T30	Bulk	1800	48	KW
High Temperature Dyeing Machine	FONG'S	TECWIN-6T30	Bulk	1800	48	KW
High Temperature Dyeing Machine	FONG'S	TECWIN-6T30	Bulk	1800	48	KW
HT Overflow Dyeing Machine	FONG'S	ALLFIT-60	Sample	60	4.5	KW
HT Overflow Dyeing Machine	FONG'S	ALLFIT-30	Sample	30	7.5	KW
HT Overflow Dyeing Machine	FONG'S	ALLFIT-120	Sample	120	7.5	KW
HT Overflow Dyeing Machine	FONG'S	ALLFIT-30	Sample	30	4.5	KW
HT Overflow Dyeing Machine	FONG'S	ALLFIT-60	Sample	60	7.5	KW
HT Overflow Dyeing Machine	FONG'S	ECO-6-2T	Sample	400	19	KW

## DYEING DIVISION MACHINE LIST - UNIT 02

Product Name	Brand	Model	Machine Type	Capacity	Power	UoM
High Temperature Rope Dyeing Machine	MCS	KAPPA K25-HT	Sample	25	–	–
High Temperature Rope Dyeing Machine	MCS	KAPPA K25-HT	Sample	25	–	–
High Temperature Rope Dyeing Machine	MCS	KAPPA K50-HT	Sample	50	–	–
High Temperature Rope Dyeing Machine	MCS	KAPPA K50-HT	Sample	50	–	–
High Temperature Rope Dyeing Machine	MCS	KAPPA K50-HT	Sample	50	–	–
High Temperature Rope Dyeing Machine	MCS	DYNAMICA DYS-1XJ-HT	Sample	250	13.5	KW
High Temperature Rope Dyeing Machine	MCS	DYNAMICA DYS-2J-HT	Bulk	400	–	KW
High Temperature Rope Dyeing Machine	MCS	DYNAMICA DYS-2J-HT	Bulk	400	–	KW
High Temperature Rope Dyeing Machine	MCS	DYNAMICA DYS-2XXJ-HT	Bulk	600	23.5	KW
High Temperature Rope Dyeing Machine	MCS	DYNAMICA DYS-2XXJ-HT	Bulk	600	23.5	KW
High Temperature Rope Dyeing Machine	MCS	DYNAMICA DYS-3XXJ-HT	Bulk	900	32.5	KW
High Temperature Rope Dyeing Machine	MCS	DYNAMICA DYS-3XXJ-HT	Bulk	900	32.5	KW
High Temperature Rope Dyeing Machine	MCS	DYNAMICA DYS-4XXJ-HT	Bulk	1200	42.5	KW
High Temperature Rope Dyeing Machine	MCS	DYNAMICA DYS-4XXJ-HT	Bulk	1200	42.5	KW
High Temperature Rope Dyeing Machine	MCS	DYNAMICA DYS-6XJ-HT	Bulk	1500	61.25	KW
High Temperature Rope Dyeing Machine	MCS	DYNAMICA DYS-6XXJ-HT	Bulk	1800	62	KW
Automatic Dosing System	MCS	THERMO-SALT	–	–	–	–
Automatic Dosing System	MCS	THERMO-DEPO	–	–	–	–
Automatic Dosing System	MCS	THERMO-CHEM	–	–	–	–

The Dyeing Division operates a total of 29 model dyeing machines, ensuring high-capacity, efficient, and consistent fabric processing across all units.

# EMBROIDERY

**P.N. Composite Limited** operates a modern embroidery unit equipped with computerized embroidery machines featuring advanced sequin devices for high-precision detailing.

The division includes **125 embroidery heads (8 machines)** with a production capacity of **1 million stitches per day**. This setup enables intricate designs, logos, appliqués, and decorative embellishments with consistent quality and accuracy.

Product Type	Product Description	RPM	Machine Q	Model	Brand
Embroidery Machine	20 HEAD, 9 COLOR FLAT WITH MULTI HEAD COMPUTERIZED EMBROIDERY MACHINE	1200	2	MODEL 0920	AUTO KING PLUS
Embroidery Machine	6 HEAD, 9 COLOR FLAT WITH MULTI HEAD COMPUTERIZED EMBROIDERY MACHINE	1200	1	MODEL 0906	AUTO KING PLUS
Embroidery Machine	20 HEAD, 9 COLOR FLAT WITH MULTI HEAD COMPUTERIZED EMBROIDERY MACHINE	1200	1	528A	AUTO KING PLUS
Embroidery Machine	40 HEAD, 6 COLOR FLAT WITH MULTI HEAD COMPUTERIZED EMBROIDERY MACHINE	1200	1	528A	AUTO KING PLUS
Embroidery Machine	9 NEEDLES 15 HEADS (SINGLE SEQUIN MACHINE) COMPUTERIZED EMBROIDERY MACHINE	700-800	1	YM 915	YUEMEI
Embroidery Machine	9 NEEDLES 16 HEADS (FLAT MACHINE) COMPUTERIZED EMBROIDERY MACHINE	700-800	1	YM 916	YUEMEI
Embroidery Machine	9 NEEDLES 8 HEADS (FLAT MACHINE) COMPUTERIZED EMBROIDERY MACHINE	700-800	1	YM 908	YUEMEI
<b>Total</b>			<b>8</b>		



# ALL- OVER PRINTING (AOP)

**P.N. Composite Limited** operates a high-capacity All-Over Printing (AOP) facility equipped with advanced rotary printing machines from Zimmer (Austria). Our AOP unit supports up to 12-color rotary printing, delivering sharp detailing, multi-repeat options, and consistent high-quality prints.

With a production capacity of **10,000 kg per day**, the unit ensures vibrant colors, smooth finishes, and fast turnaround for fashion, sportswear, and premium apparel.



## HEAT PRESS

A heat press machine provides transferring designing on to the. This machine allows to transfer of graphic design, stones placements, and other external design-related material, whether foil, stone or any other material, as per the required design. The heat press machine allows transferring individual artwork or designs on clothing materials, garments, shirts, hat brim, T-shirts, and other fabric accessories.

## GLASS TABLE PRINT

The designs, patterns or photos are printed on a wide range of fabrics on a glass table and the aid of some automated drying machines to provide the best quality. We use this department to print different designs developed from our inhouse designing team according to the requirements to print on the various fabrics according to the customer demand.





# ALL- OVER PRINTING (AOP)

## ALL-OVER PRINTING MACHINE LIST

Building	Section	Product Type	Brand	Model	Capacity
Dyeing	AOP	OPEN WIDTH & ROPE CONTINUOUS WASHING RANGE (AOP)	MCS	WASHING RANGE DWG4163 LAVA PRINT	4000
Dyeing	AOP	ROTARY SCREEN-PRINTING MACHINE	Zimmer	ROTASCREEN-TG/205	120
Dyeing	AOP	SAMPLE PRINTING MACHINE	Zimmer	MIDI II-R/61	
Dyeing	AOP	Screen Washing Machine	Zimmer	SWB-2S/196	
Dyeing	AOP	UNIVERSAL LOOP STEAMER	Zimmer	LOOPS TREAMER MODUS	70
Dyeing	Color Kitchen	GUM/THICKENER PREPARATION UNIT	K&Z	KZ 17/0682	
Dyeing	Color Kitchen	2HP MANUAL OPERATED MIXER UNITS	K&Z	KZ 17/0686	
Dyeing	Color Kitchen	5HP MIXER/HOMOGENIZER UNITS	K&Z	KZ 17/0688	
Dyeing	Color Kitchen	5HP MIXER/HOMOGENIZER UNITS	K&Z	KZ 17/0689	
Dyeing	Color Kitchen	COLOR VACUUM FILTERING AND TUB LIFTING UNIT	K&Z	KZ 17/0691	
Dyeing	Color Kitchen	PORTABLE PUMPING STATION	K&Z	KZ 17/0693	
Dyeing	Color Kitchen	COLOR TUBS AUTO-WASHING MACHINE	K&Z	KZ 170692	
Knitting	Engraving	End Ring Glueing Machine	Zimmer	RSEK/367	
Knitting	Engraving	Screen Drying and Storing Chamber	Zimmer	RSL-TS/195	
Knitting	Engraving	Trimming Tripod	Zimmer	RSL-KL/195	
Knitting	Engraving	Screen Developing Machine	Zimmer	RSL-EW/195	
Knitting	Engraving	Polymerization Chamber	Zimmer	RSL-P/195	
Knitting	Engraving	CST DLE Exposing Machine	CST	DR3500DLE17100	
Knitting	Engraving	Washing Tray	Zimmer	RSL-RE/195	
Knitting	Engraving	Screen Unpackaging Tray	Zimmer	RSL-AV/195	



# WASHING

We have in house washing facilities with waste water effluent treatment plant & can do any type of Pigment dyeing washing, Reactive dyeing, direct dyeing, Enzyme wash, Vintex wash, Cool pigment dyeing, burn out wash, Acid wash etc.

**Capacity = 15,000 pieces per day.**

Product Name	Machine Type	Q (Set)	Model	Brand	Capacity
GARMENT DYEING & WASHING MACHINE	Sample	1	GW-50	F&P	25 kg
GARMENT DYEING & WASHING MACHINE	Sample	1	GW-100	F&P	45 kg
GARMENT DYEING & WASHING MACHINE	Bulk	6	GW-600	F&P	280 kg
GARMENT ACID WASHING MACHINE	Bulk	1	GW-600	F&P	280 kg
GARMENT ACID WASHING MACHINE	Bulk	2	GW-1000	F&P	450 kg
LIFT TYPE GARMENT DYEING MACHINE	Sample	1	GH-20	F&P	20 kg
LIFT TYPE GARMENT DYEING MACHINE	Bulk	1	GH-200	F&P	200 kg
HRDRO EXTRACTOR	Bulk	1	CO-800	F&P	-
HRDRO EXTRACTOR	Bulk	1	CO-1200	F&P	-
TUMBLE DRYER MACHINE	Sample	1	TD-100	F&P	45 kg
TUMBLE DRYER MACHINE	Bulk	1	TD-200	F&P	90 kg
TUMBLE DRYER MACHINE	Bulk	4	TD-400	F&P	180 kg
AUTO CONTINUOUS HYDRO EXTRACTOR	Bulk	1	HP-900	F&P	60 kg
TUMBLE DRYER	Sample	1	RTD 75	Ram Son	75 kg
TUMBLE DRYER	Bulk	2	RTD 120	Ram Son	120 kg
TUMBLE DRYER	Bulk	2	RTD 150	Ram Son	150 kg
Washing Machine	Sample	1	RVW 35	Ram Son	35 kg
Washing Machine	Bulk	1	RVW 200	Ram Son	200 kg
Washing Machine	Sample	1	RHW DP 100	Ram Son	-
Tumble Dryer	Bulk	1	Local	Concord	-



# PRE-FINISHING & FINISHING DIVISION



## SQUEEZER

**Brand:** Bianco  
**Country of Origin:** Italy  
**Capacity:** 10,000 kg/day



## STENTER

**Brand:** Bruckner  
**Country of Origin:** German  
**Capacity:** 10,000 kg/day



## SLITTING

**Brand:** Bianco  
**Country of Origin:** Italy  
**Capacity:** 10,000 kg/day



## RELAX DRYER

**Brand:** Canlar  
**Country of Origin:** Turkey  
**Capacity:** 10,000 kg/day

## FINISHING ZONE COMPACTING

Machine Type	Brand	Country Of Origin	Capacity
Compacting	Bianco	Italy	10.00 M.T
Tublar Compacting	Tube Tex	U.S.A	08.00 M.T
Soft Setting	Dongnum	U.S.A	08.00 M.T

Sanforizing/ Auto Batcher/ Auto Roll with Packing.

# OVERVIEW PRINTING WORLD

## ALL OVER ROTARY PRINT DIVISION



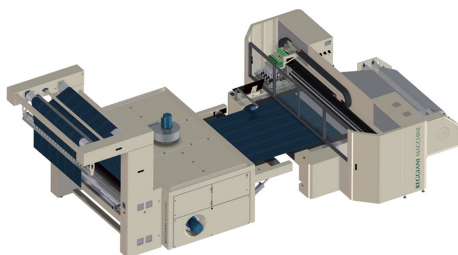
### UNICA (ROTARY PRINTING MACHINE)

Made From REGGIANI of ITALY.

Model 180 cm & color upto 12.

Maximum Production Speed is 5400mt/hr with closed bearing head & self aligning.

Also multi repeat from 640 to 1018 mm.



### SUBLIMATION PRINTING MACHINE (PAPER TO FABRIC ROLL)

It is applicable on different fabric weight from 30 to 450 gr/sqm.



### SUBLIMATION PRINTING MACHINE (PAPER TO PIECE GARMENT)

Garments Fabric CNT 100 GSM to 450 GSM

# OUR PRODUCTS RANGE

P.N. COMPOSITE MANUFACTURES A WIDE VARIETY OF KNIT AND WOVEN GARMENTS FOR MEN, WOMEN, AND CHILDREN.

## PRODUCT CATEGORIES

### MENSWEAR

- T-shirts
- Polo Shirts
- Hoodies
- Joggers
- Shorts

### WOMENSWEAR

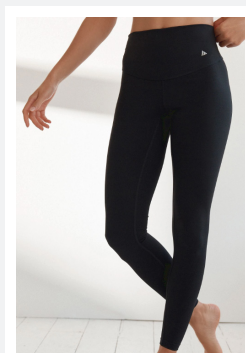
- Tops
- Leggings
- Activewear Sets
- Sports Bra

### KIDSWEAR

- Tees
- Joggers
- Sweatshirts.

### SPORTSWEAR

- Tees
- Joggers
- Sweatshirts.



### OTHERS

- Jackets
- Uniforms
- Promotional Wear





# SUSTAINABILITY & CSR

We believe responsible business is good business.

## SUSTAINABILITY INITIATIVES

- Use of organic cotton and recycled polyester
- Water recycling in dyeing units
- Solar energy integration (pilot phase)
- Waste segregation and zero-waste approach

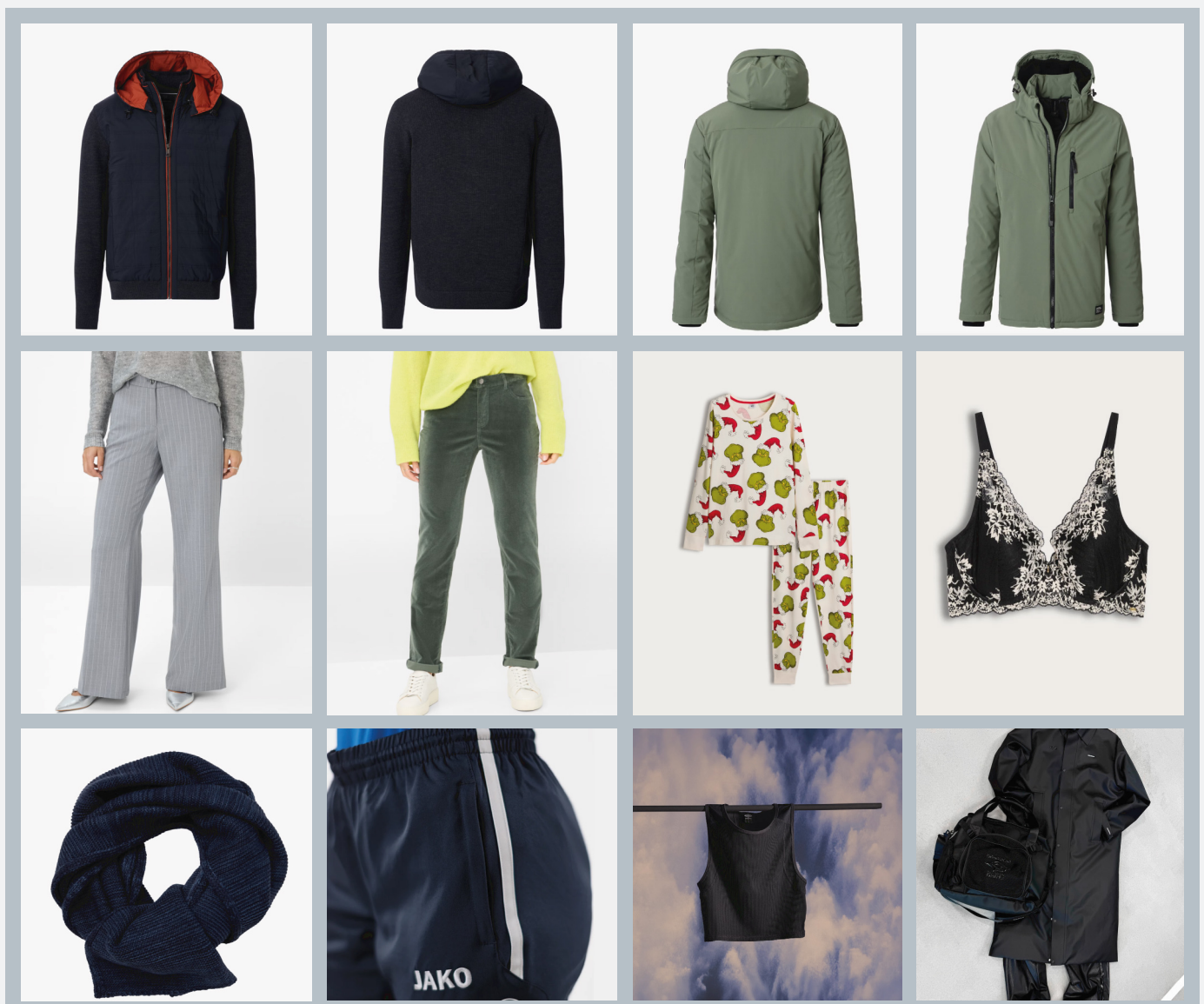
## CSR FOCUS

- Employee training & welfare programs
- Education support for workers' children



# PORTFOLIO

P.N. Composite Ltd. offers a comprehensive and diversified product portfolio designed to meet the needs of global apparel brands. From basic knitted fabrics to high-value fashion textiles, the company delivers a full range of ready-made garments, embroidery, printing, and value-added finishing solutions. Advanced production facilities, modern machinery, and skilled craftsmanship enable us to produce T-shirts, polo shirts, fleece, leggings, active-wear, children's wear, underwear, and specialty products with consistent quality, durability, and design precision. This integrated portfolio allows P.N. Composite Ltd. to serve a wide variety of market segments with flexible production capacity and dependable delivery.



# PORTFOLIO





# OUR TEAM

## **“INVESTING IN OUR PEOPLE, BUILDING OUR FUTURE”**

The team at a textile company is composed of a wide variety of individuals, each of whom has an important role to play in the company's success. At the head of the team is the company's CEO, who is responsible for setting the overall vision and direction of the company and guiding the team to success. The team also includes an operations manager, who oversees the day-to-day activities of the production process, as well as a sales manager, who is responsible for developing and executing the company's marketing and sales strategies. Additionally, the team includes designers, who use their artistic talents to create new and innovative fabrics, as well as fabric technologists, who use their expertise to create fabrics with specific properties and characteristics. Lastly, the team also includes a variety of support staff, including customer service representatives and administrative personnel, who help to ensure the smooth functioning of the company. All of these individuals work together to create quality textile products that meet the needs of their customers.





# OUR VALUABLE CLIENTS

**P.N. Composite** proudly partners with some of the world's most respected apparel brands and buyers.

## EXPORT MARKETS

- UK
- Europe (Germany, France, Netherlands)
- North America (USA, Canada)
- Australia

## CLIENT INDUSTRIES:

- Fashion & Retail
- Sports & Fitness
- Corporate & Promotional

**INDITEX**

next

**TEDDY**  
GROUP

George.

PRIMARK®

**FILA**

**O'STIN**

**BONOBOS**  
ESPÈCE EN VOIE D'ÉVOLUTION

**TESCO**

 **U.S. POLO ASSN.**  
SINCE 1890

Conbipel

**DUB**

**reverse**

**LPP**

**XYXX**

JOHN  
**RICHMOND**

# “YOUR GLOBAL APPAREL MANUFACTURING PARTNER”

QUALITY | COMMITMENT | INNOVATION

## CORPORATE HQ :

Flat # 9, House # 03, Road # 20,  
Gulshan-1, Dhaka-1212, Bangladesh.

## FACTORY ADDRESS :

529, Ambag, Nilnagar, Ward No- 10,  
Zone-07, Konabari, Gazipur-1746,  
Bangladesh.

**Tel :** +88(02) 8835224

**Fax :** +88(02) 883 5225

**E-mail :** info@pncomposite.com

**Web :** www.pncomposite.com



# THANK YOU